

A Refreshingly **Different** Way of Living

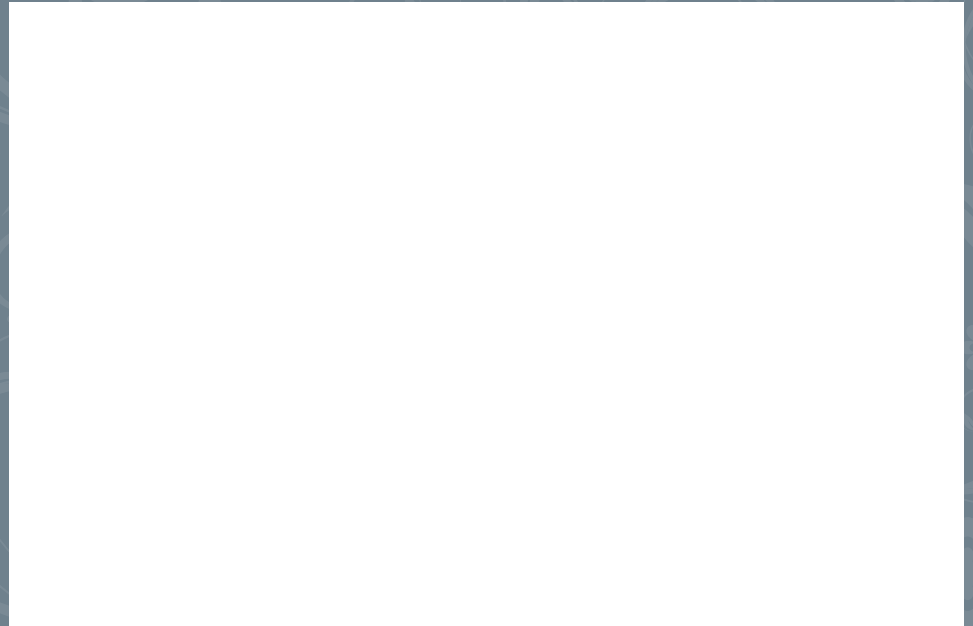


Ptrapada, Bhubaneswar





Welcome to





Awaiting to embrace you...



A unique combination of Beauty, Luxury, Comfort and Simplicity

- Project Approved By BMC & RERA.
- Connected to 60' Blacktop Road which is connected to NH-5 (Only 1 km. from NH.)
- Specifications as per customer's demand (Any top brand)
- 5 yrs. (On Electry, poncelain item, warrenty & guarenty tile, colour, lift)
- Community Hall with Multigym.
- Provisson for Open Tarrace Garden.
- 24 Hrs Water Supply.
- 24 Hrs Security.
- CCTV Camera for Common Areas.
- Power Backup For Common Area.

107, 207, 307, 407

105, 205, 305, 405



108, 208, 308, 408

106, 206, 306, 406

103, 203, 303, 403

101, 201, 301, 401

Typical floor plan



Area Statement (1st, 2nd, 3rd & 4th Floor)

Flat No.	Type	C.A	B.U.A	SBA (Sft.)
101 - 401	3 BHK	1096	1175	1528
102 - 402	3 BHK	1087	1165	1515
103 - 403	3 BHK	1034	1114	1448
104 - 404	3 BHK	1043	1124	1461
105 - 405	3 BHK	1043	1124	1461
106 - 406	3 BHK	1034	1114	1448
107 - 407	3 BHK	1085	1165	1515
108 - 408	3 BHK	1097	1176	1529

104, 204, 304, 404

102, 202, 302, 402

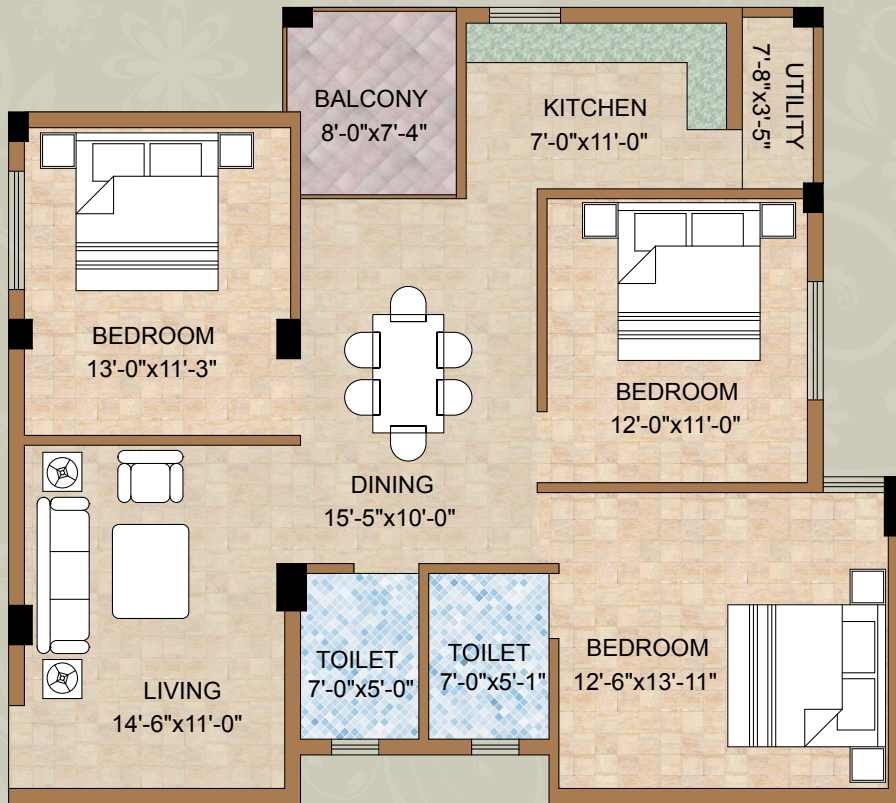


Sectional View

105, 205, 305, 405

3 BHK

SBA = 1461 Sft.



Sectional View

107, 207, 307, 407

3 BHK

SBA = 1515 Sft.



Specification

STRUCTURE :

RCC framed structure with in filled brick wall.

Steel - Fe 500D of reputed brand.

Cement - Lafarge/ Ultratech/ ACC/ Equivalent.



WIRE :

Finolex/ Greatwhite.



FLOORING :

Bed rooms - Vitrified tiles (Johnson/ Kajaria/ Equivalent brand).

Kitchen - Vitrified tiles (Johnson/ Kajaria/ Equivalent brand).

Toilet - Ceramic tiles Finish (Johnson/ Kajaria/ Equivalent brand).

Common areas - Kota stone/ Granite.



ELECTRICAL :

Modular electrical Switches (Legrand / Anchor Roma/ Equivalent).
TV and telephone Points in bedrooms & living room.

Provision for A/C in all rooms.



KITCHEN :

Design to suit modular kitchen.
Cooking platform with granite top.
Designer tiles up to 2.5 feet height above the platform.
Provision for chimney and exhaust fan.
Stainless steel sink.

Location Map



Proximity [with in 30 minits]

- Taj Vivanta : 700 mts.
- DN Regalia : 700 mts.
- Doon International School : 1 kms.
- AIIMS Hospital : 1 kms.
- Baramunda bus stand : 4 kms.
- Airport : 7 kms.
- Railway Station : 9 kms.
- Sum Hospital : 3 kms.
- St. ARNOLD'S School : 2 kms.
- Amri Hospital : 1 kms.
- Namaste ITC Hotel : 1 Kms.
- ST. Xavier School : 3 kms.
- MO Bus Stand, SBI ATM & Medical store are walkable distance.

Payment Schedule

Installment No.	Particulars	%
1 st	Booking Amount	10%
2 nd	Execution of Agreements	15%
3 rd	After Completion of Foundation	15%
4 th	After Completion of Roof Slab of respective floor	15%
5 th	On Completion of Brick work of respective flat	15%
6 th	On Completion of Plastering of respective flat	15%
7 th	On Completion of Flooring of respective flat	10%
8 th	On or before possesion	5%

All Leading Banks Approved



*Not to Scale

Developer



Bhagabanpur, Patrapada, Plot No.- 510, Khordha, Bhubaneswar

Ph : 9937405257

mail : rkassetsanddevelopers4466@gmail.com

Architect



Plot no- 499/4773, unit-202, lane-6, mallick complex,

jagamara, khandagiri-751019, Bhubaneswar, odisha

Call : +91 9861194401

Project Approved by

